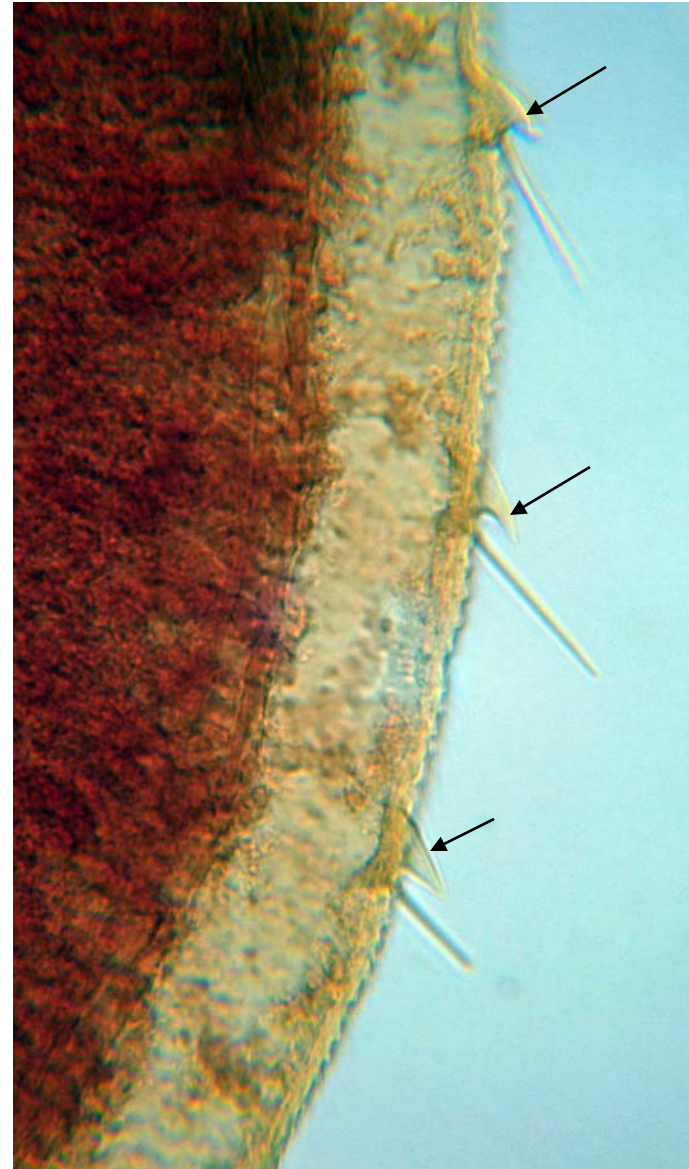
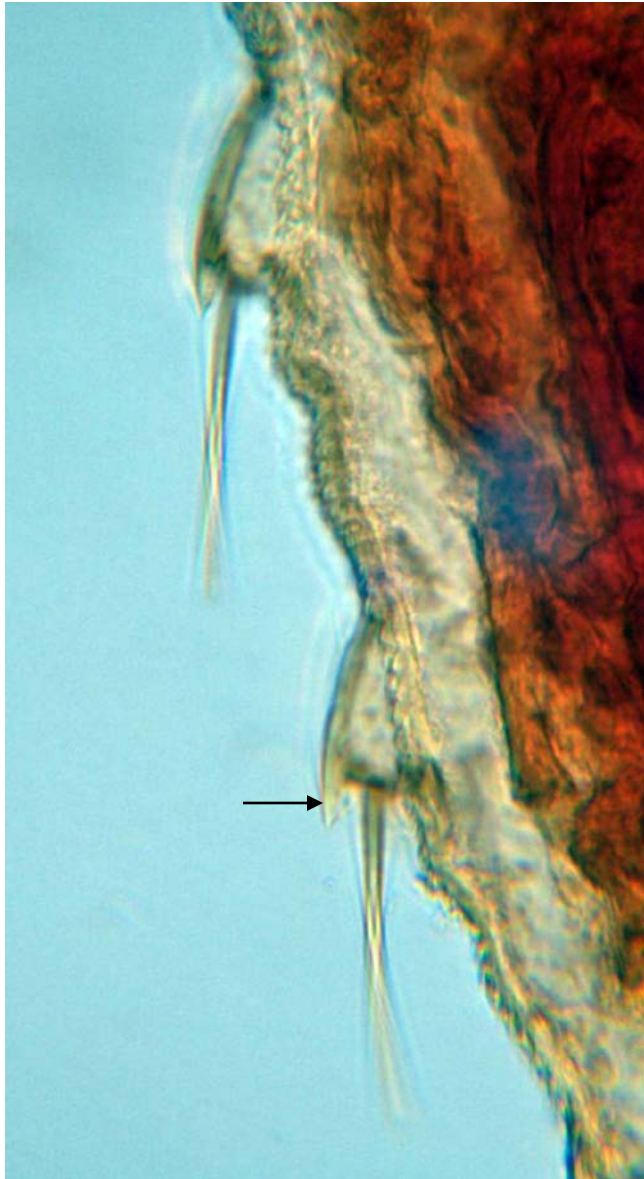




Haemodipsus sp.; female.

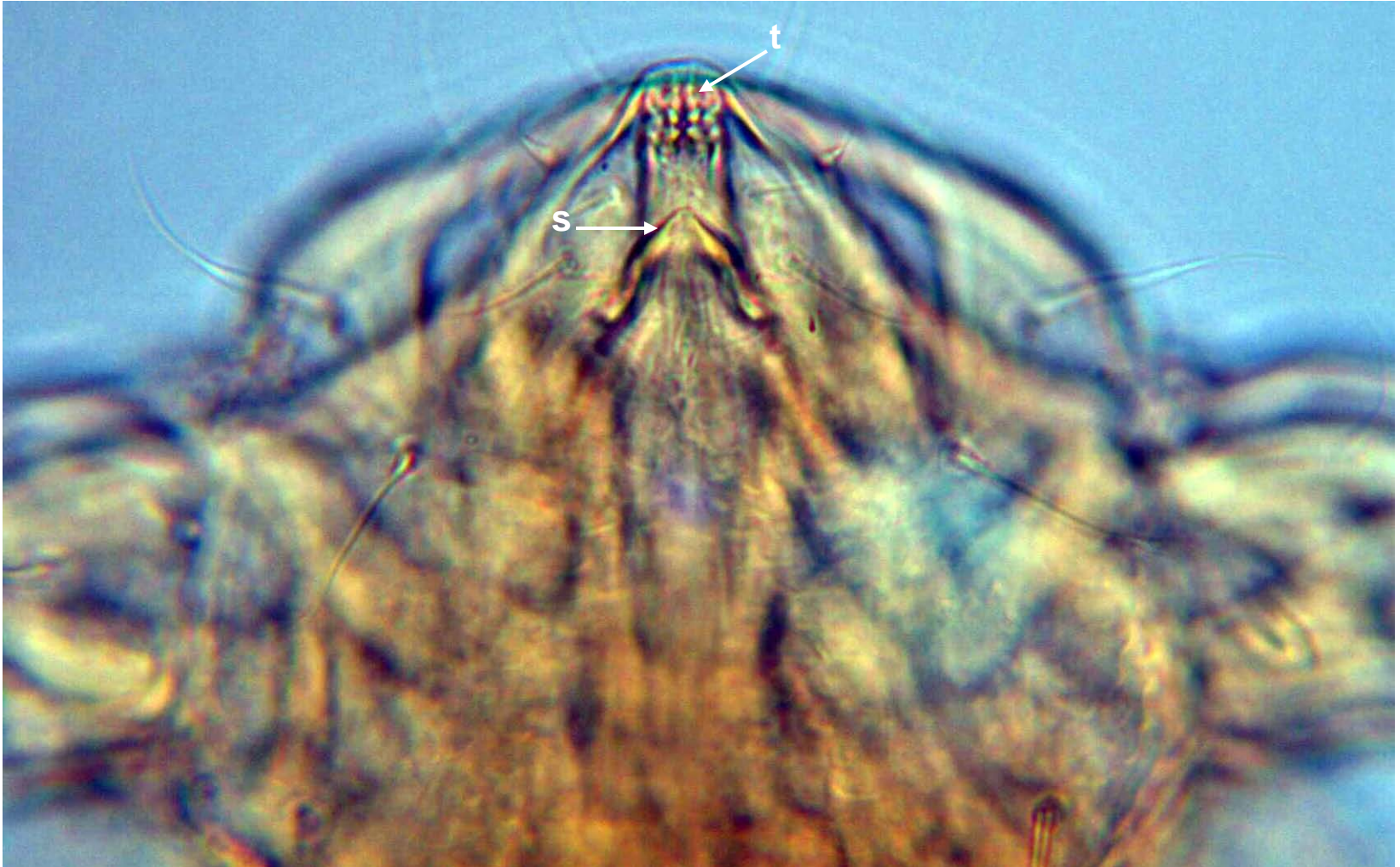
Haemodipsus sp. Note: small, sclerotized, thorn-like paratergal plates (arrows) characteristic of this genus.



Haemodipsus sp.; female. Legend: s, stylet(s); ss, stylet sac.



Haemodipsus sp. Legend: s, tips of piercing stylets;
t, teeth of prestomium (for securing louse to skin of host).



Haemodipsus sp.; nymph/female.
Note “mammillations” of body surface (right).

